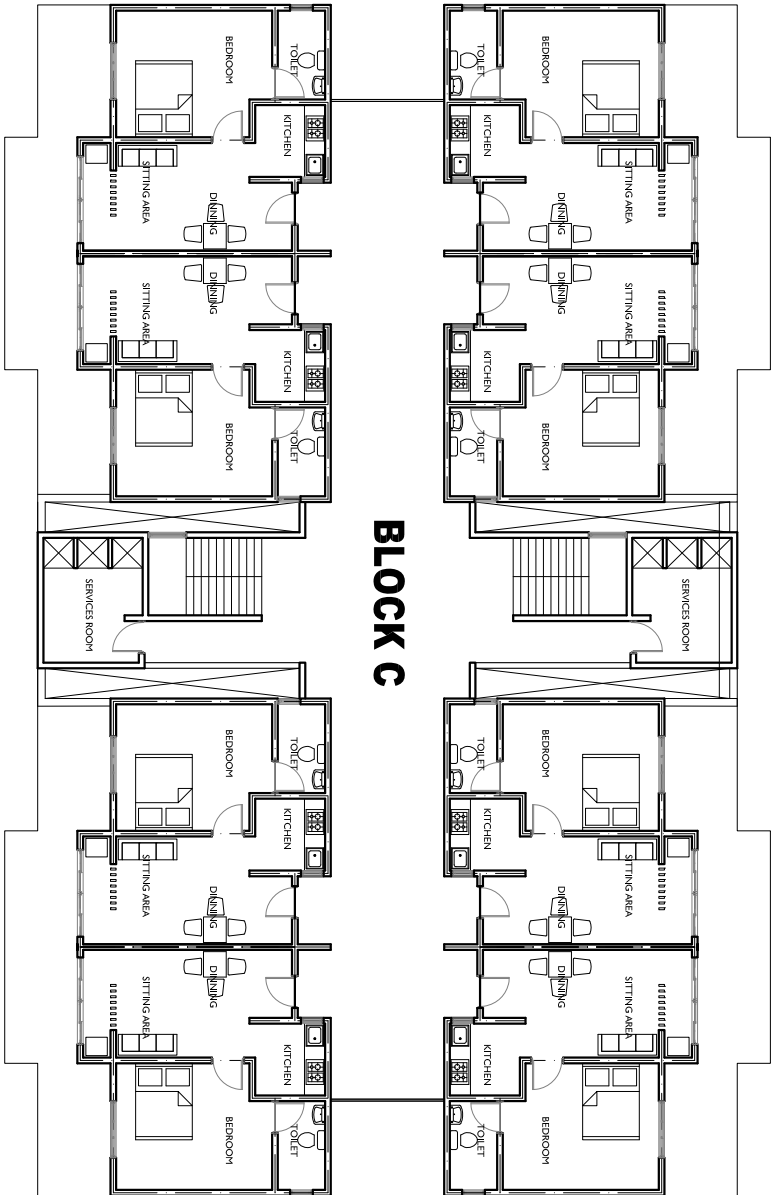


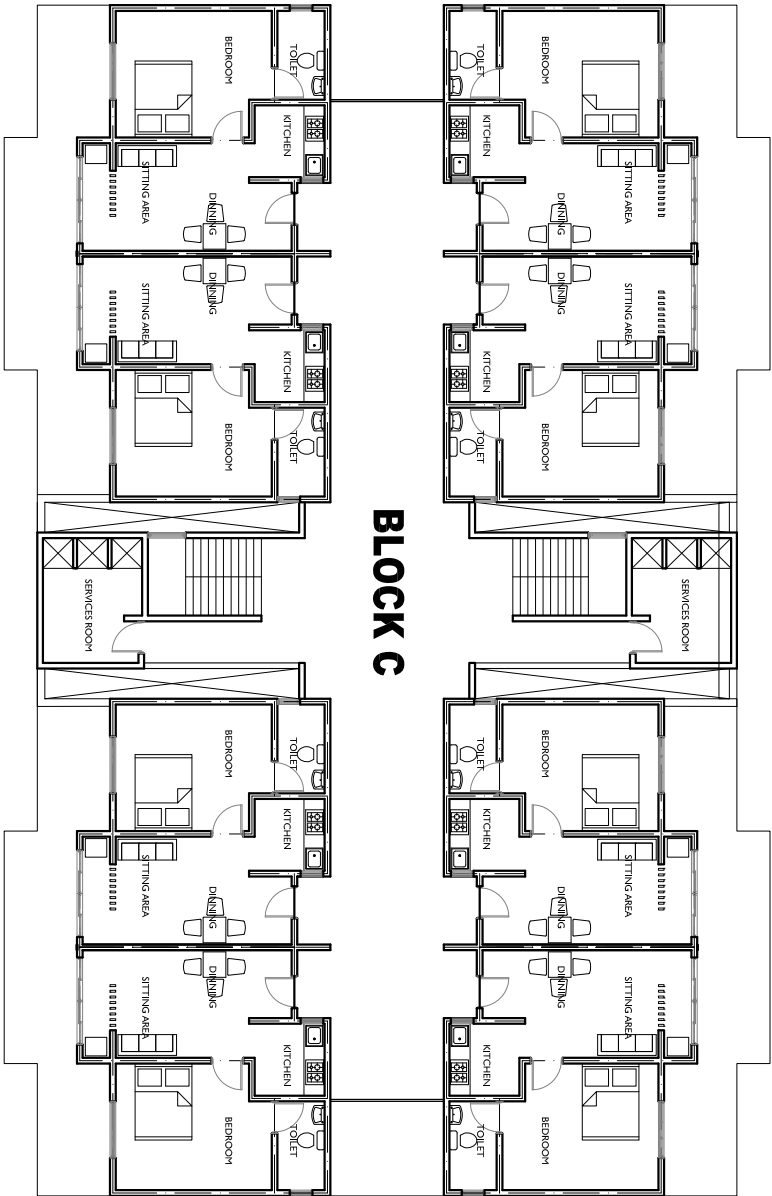
BLOCK C

GROUND FLOOR LEVEL

SCALE 1 :200



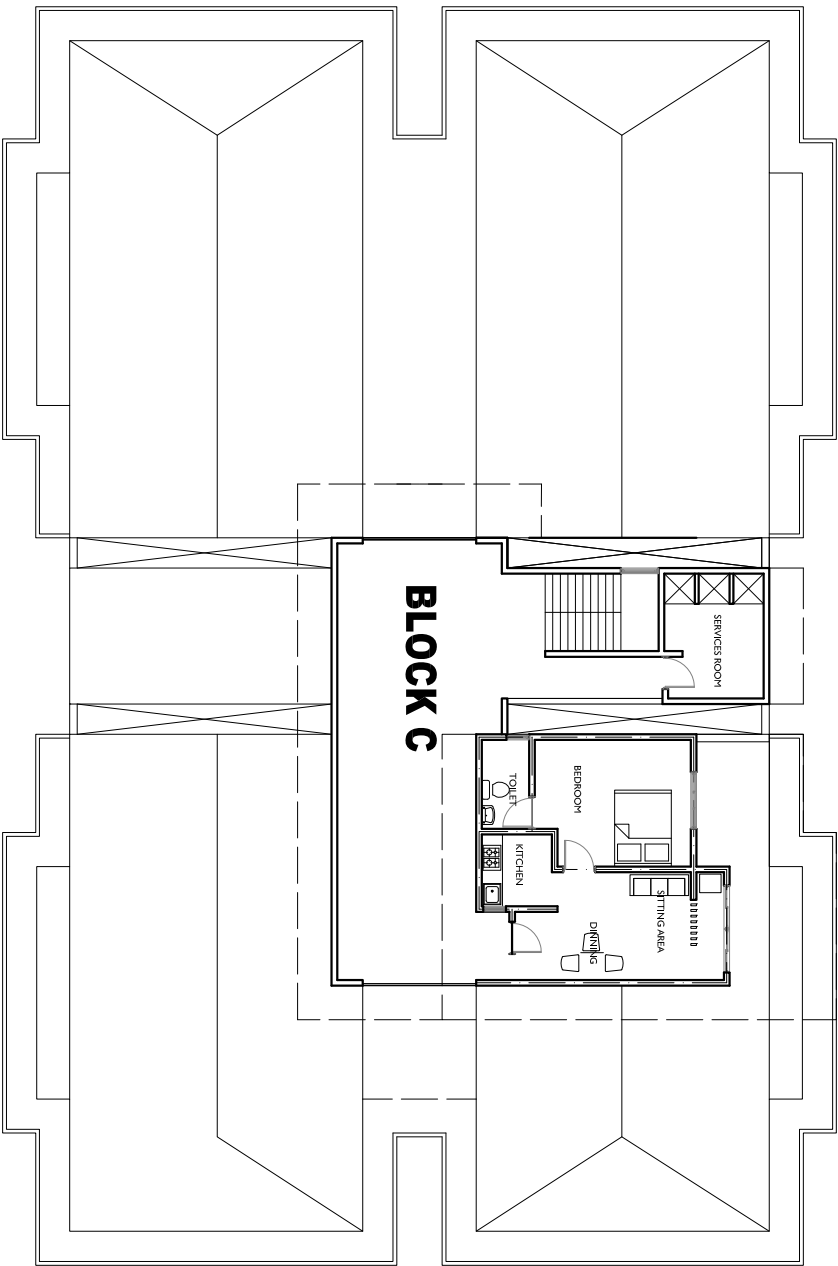
BLOCK C



BLOCK C

FIRST FLOOR LEVEL

SCALE 1 :200



BLOCK C

THIRD FLOOR LEVEL

SCALE 1 :200

CHECKER:

AMENDMENTS:

ARCH. DESIGN: THOLHATH

STRUC. DESIGN:

DRAWN BY: THOLHATH

DATE: MARCH 2018

CLIENT: MHI

NOTES:

PROJECT:

DBF 750 HOUSING PROJECT  
IN 8 SELECTED ISLANDS

CONTENTS:

BLOCK C

SCALE: 1:200

FILE:

DWG NO: A01/13

MINISTRY OF HOUSING & INFRASTRUCTURE  
INFRASTRUCTURE DEPARTMENT  
AMEENEE MAJU, MAFANNU, MALE', 20392, REPUBLIC OF MALDIVES  
TEL: +960 3004300, FAX: +960 3004301